



# Marine Commercial Air Conditioning 2024

# Contents

---

Choosing the right Air Conditioning for your boat.....	3
BlueCool V-Pro Series Variable Speed Chiller System .....	6
BlueCool A-Series Air Handlers - Compact.....	8
BlueCool A-Series Air Handlers - Slimline & Low Profile.....	10
BlueCool F-Series Fresh Air .....	12
BlueCool MyTouch .....	14
BlueCool Connect .....	16

# Which is the right air-conditioning system for your boat?



Our large product portfolio from compact air-conditioning systems up to large chiller systems leaves no wish unfulfilled. With our wide power range we provide cooling capacities from 5,000 BTU/h up to 1,500,000 BTU/h.

## BlueCool self-contained units



- Perfect solution for vessels with one to three cabins
- Very compact
- Easy to retrofit
- Extremely efficient

or

## BlueCool chiller systems



- Large power range to fit any size of boat or superyacht
- Best in marine A/C: Ability to provide adequate cooling wherever it is needed
- Ideal basis for our integrated BlueComfort solutions

+

## BlueCool Air handlers




- Modular concept enables greatest possible flexibility
- Uses minimal space in cabins since air handlers are smaller than self-contained units
- Three construction forms Compact, Slimline and Low Profile feature an especially compact, slim and flat design of the A-Series

# How to choose the right air-conditioner


**Example:** You own a yacht and would like to aircondition a room of 5 m (length) x 5 m (width) x 2 m (height).


<p><b>Step 1: Define the category of the cabin</b></p> <p>Determine the <b>category of the cabin</b>. We give an example for a cabin with an average glass area, for example a deck saloon.</p>	<p><b>Category 2</b></p>
<p><b>Step 2: Define the net volume</b></p> <p>Determine the <b>net volume of the room</b> (5 m x 5 m x 2 m = 50 m<sup>3</sup>; subtract 20 % for furniture in the room; 50 m<sup>3</sup> – 10 m<sup>3</sup> = 40 m<sup>3</sup>; If you want to air condition the whole boat, please calculate the <b>sum of your rooms</b>.</p>	<p><b>40 m<sup>3</sup></b></p>
<p><b>Step 3: Define your climate region</b></p> <p>Determine the <b>climate region</b> where you spend most of your time. For example the Mediterrean Sea is a "normal region" in the climate category.</p>	<p><b>Normal region</b></p>
<p><b>Step 4: Identify your cooling requirements</b></p> <p>Result: You need an air conditioning system with a 20,000 BTU/h <b>cooling capacity</b>.</p>	<p><b>20,000 BTU/h</b></p>
<p><b>Step 5: Decide between a self-contained and chiller system</b></p> <p>Depending on the demands you can decide on a <b>self-contained or chiller system</b> with a cooling capacity of 20,000 BTU/h.</p>	<p><b>BlueCool S20</b></p>


Step 1		Category 1			Step 3
		portlights only, cabin(s) all below deck [400 BTU/m <sup>2</sup> ]			
		region	cold	hot	
		normal			
	Volume of the rooms [m <sup>3</sup> ]*	4,000	3,000	5,000	
	10	8,000	6,000	10,000	
	20	12,000	9,000	15,000	
	30	16,000	12,000	20,000	
Step 2	40	20,000	15,000	25,000	
	50	24,000	18,000	30,000	Step 4
	60	28,000	21,000	35,000	
	70	32,000	24,000	40,000	
	80	36,000	27,000	45,000	
	90	40,000	30,000	50,000	
	100	44,000	33,000	55,000	
	110	48,000	36,000	60,000	
	120	52,000	39,000	65,000	
	130	56,000	42,000	70,000	
	140	60,000	45,000	75,000	
	150	64,000	48,000	80,000	
	160	68,000	51,000	85,000	
	170	72,000	54,000	90,000	
	180	76,000	57,000	95,000	
	190	80,000	60,000	100,000	
	200				


For precise BTU calculations, please use our Marine specification and calculation tool, available on the dealer portal at <http://dealers.webasto.com>

# The right cooling capacity

	Category 1		
	portrights only, cabin(s) all below deck (400 BTU/m <sup>3</sup> )		
Volume of the rooms L x W x H (m <sup>3</sup> )	region: normal	cold	hot
10	4,000	3,000	5,000
20	8,000	6,000	10,000
30	12,000	9,000	15,000
40	16,000	12,000	20,000
50	20,000	15,000	25,000
60	24,000	18,000	30,000
70	28,000	21,000	35,000
80	32,000	24,000	40,000
90	36,000	27,000	45,000
100	40,000	30,000	50,000
110	44,000	33,000	55,000
120	48,000	36,000	60,000
130	52,000	39,000	65,000
140	56,000	42,000	70,000
150	60,000	45,000	75,000
160	64,000	48,000	80,000
170	68,000	51,000	85,000
180	72,000	54,000	90,000
190	76,000	57,000	95,000
200	80,000	60,000	100,000

	Category 2		
	average glass area, cabins partly below deck (500 BTU/m <sup>3</sup> )		
Volume of the rooms L x W x H (m <sup>3</sup> )	region: normal	cold	hot
10	5,000	3,750	6,250
20	10,000	7,500	12,500
30	15,000	11,250	18,750
40	20,000	15,000	25,000
50	25,000	18,750	31,250
60	30,000	22,500	37,500
70	35,000	26,250	43,750
80	40,000	30,000	50,000
90	45,000	33,750	56,250
100	50,000	37,500	62,500
110	55,000	41,250	68,750
120	60,000	45,000	75,000
130	65,000	48,750	81,250
140	70,000	52,500	87,500
150	75,000	56,250	93,750
160	80,000	60,000	100,000
170	85,000	63,750	106,250
180	90,000	67,500	112,500
190	95,000	71,250	118,750
200	100,000	75,000	125,000

	Category 3		
	glass area above average, saloon above deck (600 BTU/m <sup>3</sup> )		
Volume of the rooms L x W x H (m <sup>3</sup> )	region: normal	cold	hot
10	6,000	4,500	7,500
20	12,000	9,000	15,000
30	18,000	13,500	22,500
40	24,000	18,000	30,000
50	30,000	22,500	37,500
60	36,000	27,000	45,000
70	42,000	31,500	52,500
80	48,000	36,000	60,000
90	54,000	40,500	67,500
100	60,000	45,000	75,000
110	66,000	49,500	82,500
120	72,000	54,000	90,000
130	78,000	58,500	97,500
140	84,000	63,000	105,000
150	90,000	67,500	112,500
160	96,000	72,000	120,000
170	102,000	76,500	127,500
180	108,000	81,000	135,000
190	114,000	85,500	142,500
200	120,000	90,000	150,000

	Category 4		
	very large glass areas, saloon and wheel house above deck (750 BTU/m <sup>3</sup> )		
Volume of the rooms L x W x H (m <sup>3</sup> )	region: normal	cold	hot
10	7,500	5,625	9,375
20	15,000	11,250	18,750
30	22,500	16,875	28,125
40	30,000	22,500	37,500
50	37,500	28,125	46,875
60	45,000	33,750	56,250
70	52,500	39,375	65,625
80	60,000	45,000	75,000
90	67,500	50,625	84,375
100	75,000	56,250	93,750
110	82,500	61,875	103,125
120	90,000	67,500	112,500
130	97,500	73,125	121,875
140	105,000	78,750	131,250
150	112,500	84,375	140,625
160	120,000	90,000	150,000
170	127,500	95,625	159,375
180	135,000	101,250	168,750
190	142,500	106,875	178,125
200	150,000	112,500	187,500

For extreme climatic conditions such as the Persian Gulf with sea-water temperatures of 32 °C and air temperatures of 40 °C, you have to add 25 to 30 % onto the calculated figure. On BlueCool P-Series units it is also recommended that the condenser is increased in size.



# Variable speed chiller systems

## BlueCool V-PRO Series



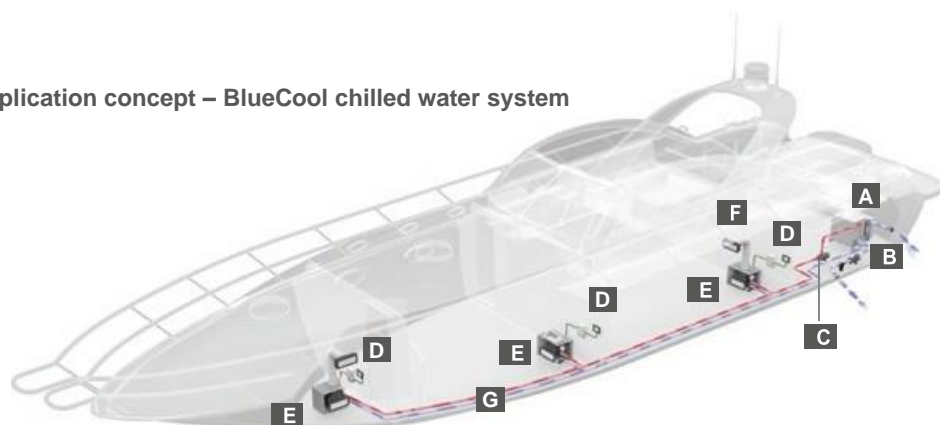
The BlueCool V-PRO Professional Variable Chiller Series with modular units are designed for mid-size up to super yachts and commercial boats. Systems can be created easily to cover a large range of cooling demand from 60,000 up to 1,080,000 BTU/h while titanium condensers provide outstanding corrosion resistance. The new V-PRO control concept with autonomous modules connected via standard network cable make system setup a child's play.

The V-PRO Series are central chilled water air conditioning units, all coming with a heat-pump function included. They produce cold or warm water/glycol to cool or heat cabins on board via separate air handling units. The V-PRO Series consists of 4 modular units providing a cooling capacity of 60, 90, 130 or 180 kBTU/h. Up to 6 of these A/C modules may be combined in a system, providing up to 1 Mio BTU/h of cooling capacity. The product is suitable to air condition leisure boats, commercial boats or superyachts. Each V-PRO unit is designed to operate fully autonomous as it comes with its own control electronics and color touch-screen user interface.

### Key benefits at a glance:

- Mono variable speed compressor units to create large systems up to 1,080,000 BTU/h
- 4 variants with 60, 90, 130 and 180 kBTU/h available
- Individual system with up to 6 modules
- Combination of different capacities possible
- 400V (50Hz) – 460 V (60 Hz) 3-phase+N system
- All electronics Integrated
- Individual accessories like manifold and rack available
- Customized electronic box available to meet additional requirements of customers or certification boards for larger vessels e.g. Lloyd, MCA

## Application concept – BlueCool chilled water system



- A** BlueCool V-PRO Series
- B** Sea water cooling circuit
- C** Circulating pump
- D** Control box with MyTouch display
- E** Fan-type air handler
- F** Cold-air outlet
- G** Chilled water circuit

## Technical Specifications

Model	BlueCool V-PRO 60 M	BlueCool V-PRO 90M	BlueCool V-PRO 130MM	BlueCool V-PRO 180M
Cooling capacity (BTU / h)	15,000 – 60,000	22,500 - 90,000	19,500 – 130,000	27,000 – 180,000
Cooling capacity (kW)	4.4 - 17.6	6.6 - 26.4	5.7 - 38.1	7.9 – 52.8
Heating via reverse cycle integrated	yes			
Voltage (V)	400V(50Hz) – 460V (60Hz) 3 phase +N			
Frequency (Hz)	50 / 60			
Current draw running (A)	1.5 - 7.5 (max. 10)	2.9 - 15.5 (max. 18.5)	4.0 - 20 (max. 23)	4.6 - 23 (max. 25)
Max. current draw in Eco 1 Mode (A)	1.5 - 5.5 (max. 6.3)	2.9 - 10.7 (max. 11.3)	4.0 - 13.6 (max. 14.9)	4.6 - 16.8 (max. 18)
Max. current draw in Eco 2 Mode (A)	1.5 - 3.9 (max. 4.8)	2.9 - 7.6 (max. 8.3)	4.0 - 9.1 (max. 10.4)	4.6 - 11.6 (max. 12.5)
Max. current draw in Eco 3 Mode (A)	1.5 - 2.9 (max. 3.8)	2.9 - 5.7 (max. 6.5)	4.0 - 7.1 (max. 8.4)	4.6 - 9 (max. 10)
Sea water connection (mm / Inch)	IG 32 – 1 ¼"			
Chilled water connection (mm / Inch)	IG 32 – 1 ¼"			
Dimensions unit (L x D x H) (mm / Inch)	630 x 410 x 650 24.8 x 16.1 x 25.6		830 x 410 x 650 32.7 x 16.1 x 25.6	
Weight core unit (kg)	89	97	120	136



### BlueCool MyTouch Display

- With the BlueCool MyTouch display, each unit can also show overall system data.
- It is the standard display for all BlueCool A/C Series:
- Full color, high resolution, interactive 2,4" touch screen
- Multiple customization options available (design, colors, language, photos, etc.)
- Protected: full access to system configuration parameters
- Compatible with Vimar Eikon, Eikon EVO, Plana, Bticino Axolute



### BlueCool V-PRO system

BlueCool V-PRO can easily be arranged as a system with many optional accessories:

- ABS manifolds
- Steel rack system
- Pump Control Box
- Remote Connection Box
- Master Control box
- BlueCool Connect

# BlueCool A-Series

## Compact Air Handlers



The BlueCool A-Series air handlers are distinguished by their compact dimensions, high performance, modular concept and unique condensation management system which enable customers to create the perfect ambience by selectively heating or cooling individual cabins.

With the flexible vibration isolation mount and larger ducts for less air speed noise, the A-Series air handlers are super silent.

Further enhancing the units, the insulated air bleeder valve is standard and ensuring ease of installation the blowers can be rotated and standardised plumbing connections utilised.

The exclusive Instant Drain condensate management system means there is no standing water guaranteed up to 30° heel for the Compact and Slimline models and extra high walls on the condensate pan for the Low Profile models. The multidirectional high angle slope design of the condensate pan allows for immediate drainage.

### Product features:

- 3 models - Compact, Slimline and Low Profile to suit any application
- Units from 4,000 BTU/h - 36,000 BTU/h
- New modular system with various options
- Electric heat module (EHM) and Flow Control Valve available
- Innovative Webasto Instant Drain system for smart management of condensation
- High quality stainless steel design
- High cooling capacity and air flow
- Flexible vibration isolation mounts and larger ducts to reduce air noise
- Oversized heat exchanger tested under tropical conditions
- Compatible with the BlueCool MyTouch display



## Technical Specifications

	A4 Compact	A6 Compact	A9 Compact	A12 Compact	A18 Compact	A24 Compact	A36 Compact
Capacity (BTU/h) **	4,000	6,000	9,000	12,000	18,000	24,000	36,000
Capacity (kW)**	1.2	1.9	2.8	3.6	5.6	7.2	10.7
Air flow (m <sup>3</sup> /h)*	230	380	420	560	750	1120	1550
Ø Blower connection (mm)	100 (round)	125 (round)	125 (round)	150 (oval)	150 (oval)	2x 150 (oval)	2x 150 (oval)
Weight (kg)	6	7	9	10	12	16	21
Current draw running (A)	0.6	0.5	0.6	0.7	1.0	1.3	2.1
Ø Chilled water connection	3/4"	3/4"	3/4"	3/4"	3/4"	3/4"	3/4"
Dimensions (H x W x L mm)	287 x 249 x 381	287 x 280 x 411	312 x 291 x 456	312 x 279 x 491	362 x 281 x 581	362 x 301 x 636	487 x 302 x 701
Dimensions with valve (H x W x L mm)	287 x 249 x 381	287 x 280 x 411	312 x 291 x 456	312 x 279 x 491	362 x 281 x 581	362 x 301 x 636	487 x 302 x 701
Min. chilled water flow (L/h)	228	406	626	568	793	1257	1883
Blowers	1	1	1	1	1	2	2
Max. ambient temp (°C)	50	50	50	50	50	50	50
Pressure loss chilled water	0.07	0.12	0.15	0.14	0.16	0.13	0.34
Condensation drains	2	2	2	2	2	2	2
Ø Condensation drain (mm)	16	16	16	16	16	16	16

\* with 2m of air duct, one 90° bend, air outlet grille at 230V/50Hz \*\* Intake air of 32°C/47%rh, water inlet temperature of 5°C and at 230V/50Hz

# BlueCool A-Series

## Slimline and Low Profile Air Handlers



The BlueCool A-Series air handlers are distinguished by their compact dimensions, high performance, modular concept and unique condensation management system which enable customers to create the perfect ambience by selectively heating or cooling individual cabins.

With the flexible vibration isolation mount and larger ducts for less air speed noise, the A-Series air handlers are super silent.

Further enhancing the units, the insulated air bleeder valve is standard and ensuring ease of installation the blowers can be rotated and standardised plumbing connections utilised.

The exclusive Instant Drain condensate management system means there is no standing water guaranteed up to 30° heel for the Compact and Slimline models and extra high walls on the condensate pan for the Low Profile models. The multidirectional high angle slope design of the condensate pan allows for immediate drainage.

### Product features:

- 3 models - Compact, Slimline and Low Profile to suit any application
- Units from 4,000 BTU/h - 36,000 BTU/h
- New modular system with various options
- Electric heat module (EHM) and Flow Control Valve available
- Innovative Webasto Instant Drain system for smart management of condensation
- High quality stainless steel design
- High cooling capacity and air flow
- Flexible vibration isolation mounts and larger ducts to reduce air noise
- Oversized heat exchanger tested under tropical conditions
- Compatible with the BlueCool MyTouch display

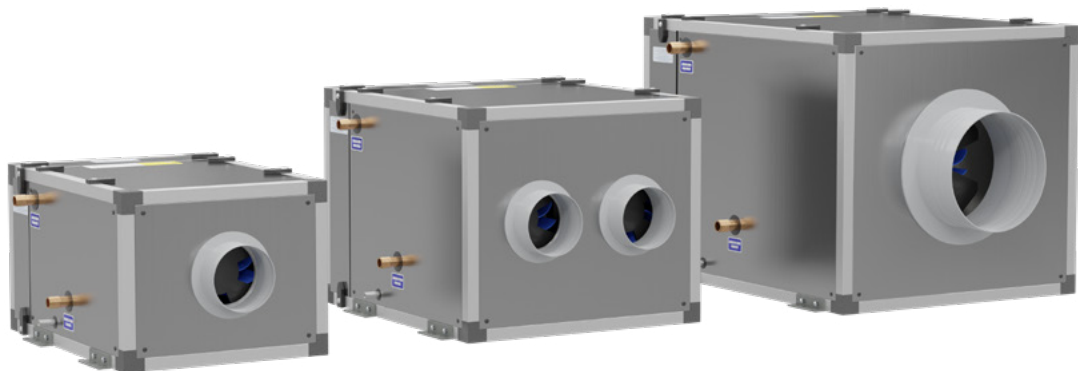
# Technical Specifications

	A6 Slimline	A9 Slimline	A12 Slimline	A18 Slimline	A6 Low Profile	A9 Low Profile	A12 Low Profile	A18 Low Profile
Capacity (BTU/h)**	6,000	9,000	12,000	18,000	6,000	9,000	12,000	18,000
Capacity (kW)**	1.9	2.8	3.6	5.6	1.9	2.8	3.6	5.6
Air flow (m <sup>3</sup> /h)*	380	420	560	750	380	420	560	750
Ø Blower connection (mm)	125 (round)	125 (round)	150 (oval)	150 (oval)	125 (round)	125 (round)	150 (oval)	150 (oval)
Weight (kg)	7	9	10	12	10	11	13	16
Current draw running (A)	0.5	0.6	0.7	1.1	0.5	0.6	0.7	1.1
Ø Chilled water connection	3/4"	3/4"	3/4"	3/4"	3/4"	3/4"	3/4"	3/4"
Dimensions (H x W x L mm)	588 x 217 x 411	611 x 217 x 456	619 x 217 x 494	666 x 218 x 581	205 x 437 x 582	205 x 482 x 606	205 x 516 x 614	205 x 599 x 661
Dimensions with valve (H x W x L mm)	588 x 217 x 479	611 x 217 x 524	619 x 217 x 559	666 x 218 x 649	205 x 487 x 582	205 x 532 x 606	205 x 567 x 614	230 x 657 x 661
Min. chilled water flow (L/h)	406	626	568	793	406	626	568	793
Blowers	1	1	1	1	1	1	1	1
Max. ambient temp (°C)	50	50	50	50	50	50	50	50
Pressure loss chilled water (bar)	0.12	0.15	0.14	0.16	0.12	0.15	0.14	0.16
Condensation drains	2	2	2	2	2	2	2	2
Ø Condensation drain (mm)	16	16	16	16	16	16	16	16

\* with 2m of air duct, one 90° bend, air outlet grille at 230V/50Hz \*\* Intake air of 32°C/47%rh, water inlet temperature of 5°C and at 230V/50Hz

# BlueCool F-Series

## Fresh Air Make Up Units

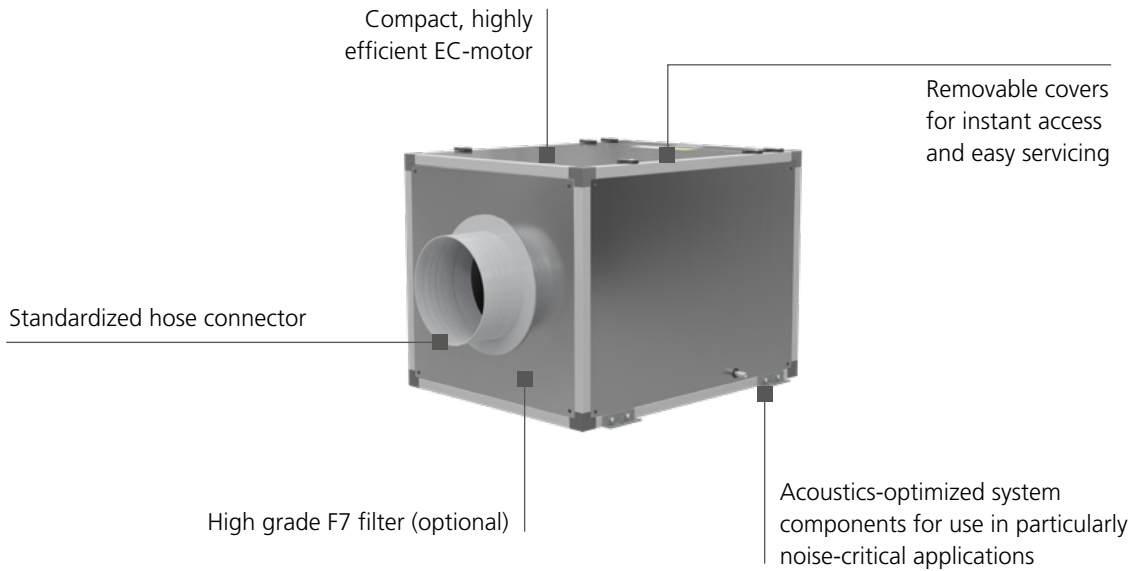


BlueCool F-Series fresh air systems are the ideal complement to your central chiller system. Fresh outside air is filtered and cooled before it is brought into the cabin at the ideal comfort temperature. Stale air is extracted and transported to the outside.

A sophisticated control concept of cooling and heating ensures the ideal condition of temperature and humidity.

### Key benefits at a glance:

- Higher air flow rate from 500 to 2000 m<sup>3</sup>/h with three variants each for fresh air and extract air.
- All units are operating with high efficiency EC-blower with high back pressure resistance.
- High cooling capacity, increased by 75 % up to 84 kBTU/h. Ideal solution for larger yachts.
- Standardized and compact design.
- High efficiency F7 air filters available (optional).
- Improved climate control logic for constant supply air temperatures by means of integrated solenoid proportional valve and up to 20 kBTU/h electric auxiliary heating.



## Technical Data

	BlueCool F-Series FreshAir and Extract					
	F500 FreshAir	F1000 FreshAir	F2000 FreshAir	F500 Extract	F1000 Extract	F2000 Extract
Air flow (300 Pa) [m³/h]	500	1000	2000	500	1000	2000
Air flow (300 Pa) [cfm]	294	588	1177	294	588	1177
Cooling capacity [kBTU/h]	21	42	84	–	–	–
Cooling capacity [kW]	6.0	12.0	25.0	–	–	–
Heating capacity 'chilled' water [kBTU/h]	21	42	84	–	–	–
Heating capacity 'chilled' water [kW]	6.0	12.0	25.0	–	–	–
Heating capacity electric [kBTU/h]	5.0	10.0	20.0	–	–	–
Heating capacity electric [kW]	1.5	3	6	–	–	–
Heating capacity total [kBTU/h]	26	52	104	–	–	–
Heating capacity total [kW]	7.5	15	31	–	–	–
Voltage [V]	230	230	230	230	230	230
Frequency [Hz]	50/60	50/60	50/60	50/60	50/60	50/60
Current draw Cooling [A] 50 + 60 Hz max.	7.5	14.9	29.8	–	–	–
Current draw Heating [A] 50 + 60 Hz max. ('chilled' water + electric)	7.5	14.9	29.8	–	–	–
Current Blower [A]	0.8	1.4	2.7	0.8	1.4	2.7
Power consumption heating [kW]	1.7	3.3	6.6	–	–	–
Power consumption cooling [kW]	1.7	3.3	6.6	–	–	–
Chilled Water connection [mm]	DN20	DN25	DN32	–	–	–
Chilled Water connection [Inch]	3/4	1	1 1/4	–	–	–
Minimum Chilled Water flow [l/min.]	18	37	73	–	–	–
Dimensions L x H x W [mm]	720 x 400 x 500	760 x 550 x 650	930 x 700 x 750	320 x 320 x 320	450 x 450 x 450	600 x 600 x 600
Dimensions L x H x W [inch]	28.3 x 15.7 x 19.7	29.9 x 21.7 x 25.6	36.6 x 27.6 x 29.5	12.6 x 12.6 x 12.6	17.7 x 17.7 x 17.7	23.6 x 23.6 x 23.6
Discharge connection diameter [mm]	150	2x 150	315	150	200	315
Discharge connection diameter [inch]	6	7.5	12.5	6	8	12.5
Suction connection diameter [mm]	150	200	315	150	200	315
Suction connection diameter [inch]	6	8	12.5	6	8	12.5
Weight Unit [kg]	42	65	110	25	35	60
Weight Electrical Box [kg]	7	7	7	–	–	–



# BlueCool Air-Conditioning

## MyTouch Display



The BlueCool MyTouch display is compatible with the BlueCool Air-Conditioning series.

The display forms part of a complete electronic control system and includes the A/C controller card and connecting cables/sensors.

Simple symbols and a clearly organised control menu allows for easy operation.

The MyTouch display features a series of functions such as a timer, error messages with descriptions, display of operating values and a configuration of the standby display.

The MyTouch display is customisable with cover plate systems such as; Vimar Eikon, Vimar Eikon EVO, Vimar Plana and Btcino Axolute, which allows for adapting the display to the existing design of the vessel.

### Product features:

- Full colour, high resolution, interactive touch display
- Customisable Multi Design Touch Display with 3 different user designs
- Intuitive icons and menu, in 10 languages
- 3 different menu levels
- Intuitive operation for end customer
- Advanced settings for crew member
- Complete parameter access for technician
- Compatible with BlueCool Expert



## Technical Specifications

<b>MyTouch Display</b> Dimensions (L x W x H mm)	83 x 28 x 55
<b>MyTouch Display with bezel</b> Dimensions (L x W x H mm)	93 x 28 x 73



Customisable to many cover plate systems like:

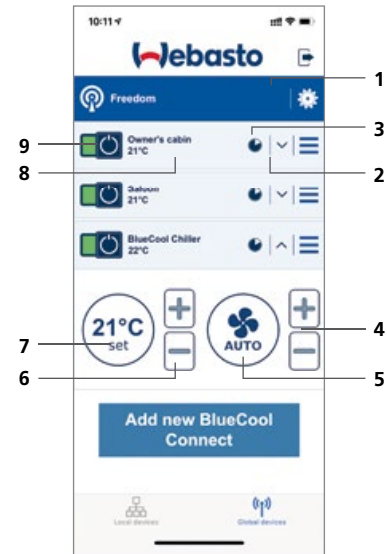
- Vimar Eikon
- Vimar Eikon EVO
- Vimar Plana
- Btcino Axolute

# BlueCool Connect

## One Device Gets All Connections Done

Whenever there is a demand for remote operation and servicing the BlueCool Connect will be the best choice. Checking onboard temperatures and settings, modifying system parameters or collecting a status report and sending it onshore remotely. The BlueCool Connect offers the same functions as if you would be on the spot, but with the comfort of doing it from anywhere in the world with many internet devices available.

- |                                    |   |
|------------------------------------|---|
| <b>1. Toggle for Units/Groups</b>  | Visible when one or more groups have been created |
| <b>2. Expand/Collapse controls</b> | Opens /closes cabin settings displays             |
| <b>3. Timer</b>                    | Setting the Timer                                 |
| <b>4. Blower Control</b>           | Set blower speed or Auto setting                  |
| <b>5. Blower Setting</b>           | See current blower setting                        |
| <b>6. Temperature Control</b>      | Set cabin temperature                             |
| <b>7. Temperature Setting</b>      | See temperature set value                         |
| <b>8. Actual Cabin Temperature</b> | See actual cabin temperature                      |
| <b>9. On/Off for Units/Groups</b>  | One click operation of multiple BlueCool Units    |

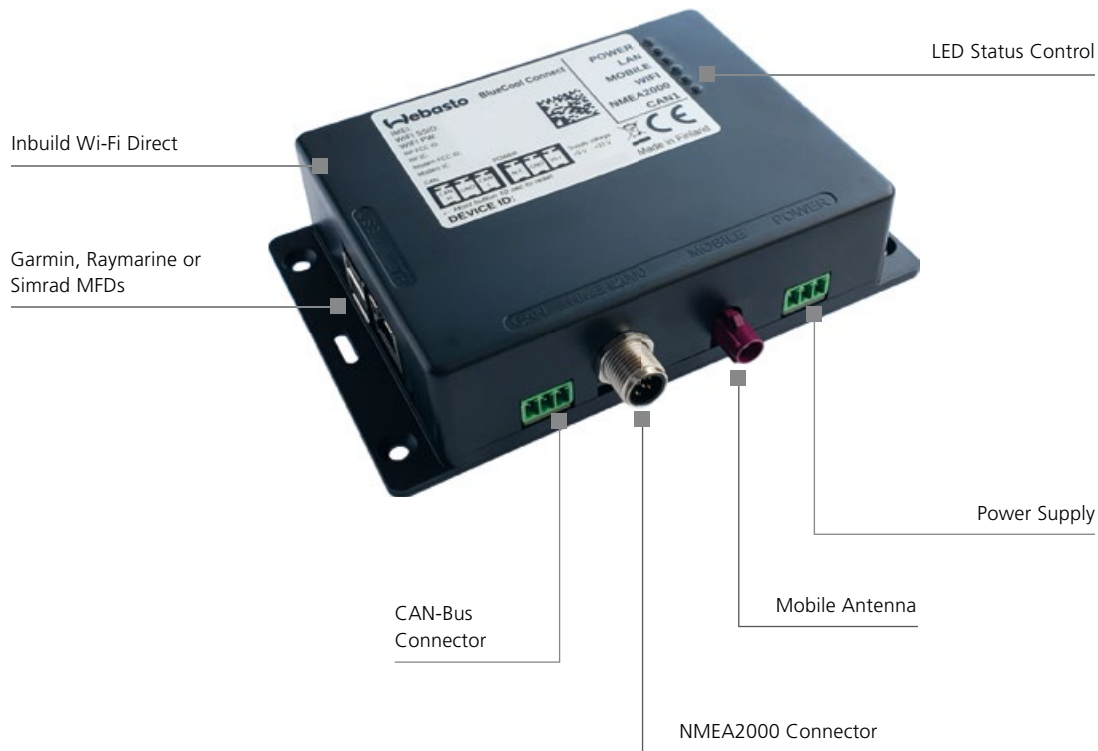


### Key Benefits at a Glance:

- Accessible from anywhere in the world
- Use any device like Smartphone, Tablet or Computer
- Central monitoring via your Multi-Functional-Display e.g. Garmin, Raymarine, Simrad, Lowrance and B & G displays with HTML5 functionality
- Remote condition monitoring system
- NMEA 2000 interface
- Use of handheld, portable equipment to monitor A/C equipment periodically
- Collect data and send it onshore remotely

# BlueCool Connect

One Device Gets All Connections Done



## Technical data

	BlueCool Connect
Operating voltage range (V)	9 – 33
Power consumption (W)	13.5
Input	CAN (SAE J1939)
Output	Wi-Fi Direct Mobile (Telephone) Network NMEA 2000 LAN – Ethernet
Dimensions (L x B x H) (mm)	140 x 104.9 x 33.8
Weight (kg)	0.34
Operating Temperature (°C)	-40 to +80

**Webasto Thermo & Comfort Australia Pty Ltd**  
423-427 The Boulevard  
Kirrawee NSW 2232  
Australia

+61 (0)2 8536 4800  
svc-info@webasto.com

[webasto.com](http://webasto.com)