



Isotherm Fridge & Freezer Catalogue - RV

Indel Webasto Marine, based in St. Agata Feltria in Italy, is the successful Joint Venture between the Italian refrigeration leader Indel B and the leading automotive supplier Webasto, based in Germany. These two companies joined forces to bring high quality galley equipment solutions to marine applications. Indel Webasto Marine stands for high quality products in the Marine & RV industries.

indelB

Webasto



Table of Contents

Cruise Elegance Refrigerators	1
Cruise Inox Clean Touch Refrigerators	3
Cruise Refrigerators	5
Cruise Freezers	7
Drawer Fridge & Freezers - Overview	9
Drawer 16.....	11
Drawer 30.....	13
Drawer 70.....	15
Drawer 85 & 130	17
Freeline 115	19
Cruise 195 Classic	21
Inox Combi Fridge & Freezers	23

Isotherm Refrigeration

CRUISE ELEGANCE



The CRUISE Elegance range of fridges have been designed specifically with the RV market in mind and provide the ultimate in style and technology.

The extra thick door insulation increases the efficiency of the fridges and lowers the power consumption. It also helps to avoid any possible water condensation at very high outside temperatures.

With a simple slide of the invisible mechanism, the integrated vent-lock system switches to ventilation mode where the door is kept open while the fridge is not in operation.

Installation is easy with the fixing of the cabinet directly from the interior of the fridge. An innovative bushing structure prevents the crushing of the insulated side wall.

Product features:

- Extra thick insulation on the door
- Large handle for easy opening from a central location
- Easy to change door opening
- Integrated Vent-lock system
- Blue LED internal light
- Quick and easy installation

Technical Specifications

Type	Volume (L)	Dimensions H x W x D mm	Door Thickness (mm)	Weight (kg)	Power Consumption (W/24hrs)	Compressor Parts	Freezer Volume (L) -6°C
CR EL 49	49	520 x 381 x 450*	50	16	265	BD35F	4
CR EL 65	65	527 x 448 x 480*	50	17	275	BD35F	4
CR EL 85	85	627 x 475 x 550*	50	24	380	BD35F	6
CR EL 130	130	752 x 525 x 545*	50	29	400	BD35F	6

* Depth includes door



Elegance 49



Elegance 65



Elegance 85



Elegance 130

Isotherm Refrigeration

CRUISE INOX CLEAN TOUCH



The Inox Clean Touch represents the latest development of the world-wide appreciated Elegance product line. It combines in fact the Cruise Elegance line features (except Vent-Lock system) with a new door design in stainless steel especially treated to avoid fingerprints (inox anti-fingerprint). This new material combines a state of the art marine design with a very easy cleaning and maintenance of the refrigerator. The Elegance line handle is nicely flush mounted into a new door and centrally located to allow easy switch of the hinge opening side.

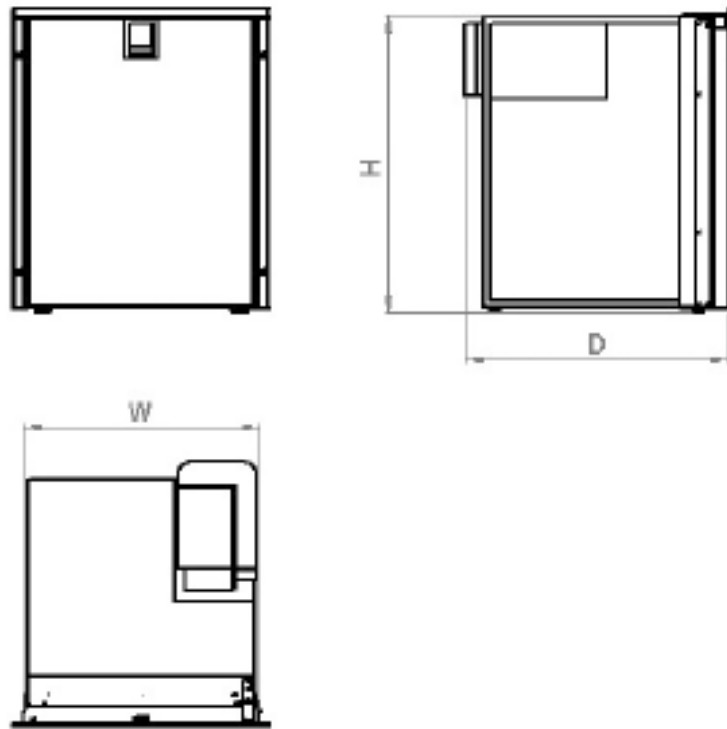
Product features:

- 5 volumes; 42, 49, 65, 85, 130liters
- 3 sided, high quality stainless steel flush mounting frame as standard, 4th side as optional
- Easy fix installation solution
- Reliability: Secop compressors
- Extra-thick insulation for low power consumption
- White LED internal light

Technical Specifications

Type	Volume (L)	Dimensions H x W x D mm	Weight (kg)	Power Consumption (W/24hrs)	Compressor Parts	Freezer Volume (L) -6°C
CR 42 Inox Clean Touch	42	525 x 400 x 500	15	285	BD1.4F	4
CR 49 Inox Clean Touch	49	525 x 400 x 500	18	265	BD35F	4
CR 65 Inox Clean Touch	65	528 x 470 x 520	21	275	BD35F	4
CR 85 Inox Clean Touch	85	625 x 495 x 550	24	368	BD35F	6
CR 130 Inox Clean Touch	130	750 x 545 x 555	27	418	BD35F	6

Cruise Inox Clean Touch



Isotherm Refrigeration

CRUISE



Isotherm CRUISE Refrigerators combine technological innovation with sophisticated, yet practical design. The CRUISE Classic refrigerators are available from 36L to 271L and provide numerous customisation options.

Some configuration options:

Door panel on classic models are easily changed to match décor.

3 sided mounting frame for complete flush integration available.

INOX version with stainless steel door, mounting frame and handle as standard.

Universal AC/DC kit optional: allows auto switching of power supply instantly when AC power is available.

Product features:

- Fan-cooled 12/24V Secop compressor
- Custom door panels to complement any interior (grey door as standard)
- Freezer compartment (except Drink versions)
- One piece inner lining food-quality, high density plastic with rounded corners for easy cleaning
- Constructed of corrosion resistant materials
- Interior light (not on CR36, CR42, CR100)
- Magnetic rubber seals keep moisture out and door firmly closed
- Right hand or Left hand side opening possible (must be stated when ordering)

Technical Specifications

Type	Volume (L)	Dimensions H x W x D mm	Weight (kg)	Power consumption (W/24hr)	Compressor Parts	Freezer Volume (L)
CR 36	36	250 x 440 x 720	17	300	BD35F	-
CR 36 INOX	36	255 x 453 x 715	17	300	BD35F	-
CR 40 CUBIC	40	430 x 420 x 630	19	186	BD35F	40 (-12°C)
CR 42 CLASSIC	42	522 x 380 x 495	14	300	BD35F	5 (-6°C)
CR 49 CLASSIC	49	523 x 386 x 490	16	278	BD35F	5 (-6°C)
CR 65 CLASSIC	65	527 x 455 x 520	19	288	BD35F	5 (-6°C)
CR 85 CLASSIC	85	620 x 477 x 545	22	386	BD35F	8 (-6°C)
CR 90 CLASSIC	90	845 x 478 x 470	24	520	BD35F	20 (-18°C)
CR 100 CLASSIC	100	746 x 487 x 495	26	400	BD35F	6 (-6°C)
CR 130 CLASSIC	130	746 x 527 x 545	23	438	BD35F	6 (-6°C)
CR 130 DRINK	130	746 x 527 x 560	27	400	BD35F	-
CR 130 DRINK INOX	130	750 x 545 x 560	28	400	BD35F	-
CR 160 DRINK INOX	160	870 x 626 x 610	40	512	BD50F	-
CR 195 COMBI CLASSIC	130/65	1345 x 550 x 580	51	840	2 x BD35F	65 (-18°C)
CR 195 INOX	130/65	1345 x 545 x 580	51	840	2 x BD35F	65 (-18°C)
CR 200 CLASSIC	150/50	880 x 730 x 620	53	800	BD50F	50 (-12°C)
CR 200 INOX	150/50	868 x 730 x 620	53	800	BD50F	50 (-12°C)



CR 130 DRINK INOX



CR 200 CLASSIC

Isotherm Refrigeration

CRUISE FREEZERS



Configuration options:

Door panel on classic models are easily changed to match décor.

3 sided mounting frame for complete flush integration available.

INOX version with stainless steel door, mounting frame and handle as standard.

Universal AC/DC kit optional: allows auto switching of power supply instantly when AC power is available.

Product features:

- Extra thick insulation for excellent cooling performance and low power consumption
- 12/24 V compressor (AC/DC power kit optional)
- Door with safety lock and magnetic rubber seal

Technical Specifications

Type	Volume Litres	Dimensions HxWxD mm	Weight Kgs	Power Consumption** Avg/max	Compressor Parts	Freezer compartment specifics
CR 63 F	63	625 x 475 x 555*	20	440	BD35F	63 (-18°C)
CR 63 F INOX	63	625 x 495 x 555	24	440	BD35F	63 (-18°C)
CR 65 F	65	620 x 525 x 510*	20	440	BD35F	65 (-18°C)
CR 65 F INOX	65	620 x 545 x 545	24	440	BD35F	65 (-18°C)
CR 90 F	90	745 x 525 x 505*	25	550	BD35F	90 (-18°C)
CR 90 F INOX	90	755 x 545 x 545	29	550	BD35F	90 (-18°C)

* Door not included (= 40mm)

** Power consumption W/24h in operation on 12V with -18°C in the freezer space, ambient temperature +25°C according to Standards ISO 15502:2005 and EN 153:2006

Cut out dimensions: H+ 10mm; W+ 5mm

Excellent solution for a side by side fridge-freezer application



Side by side installation of the CR 130 fridge and the CR 90 freezer with the same outside dimensions

Isotherm Refrigeration

DRAWER REFRIGERATORS & FREEZERS



The Drawer range of fridges and freezers encompass high quality robust construction with user friendly design to create highly functional units.

The convenient drawer openings allow for easy access to food and drinks and the innovative Isotherm off-shore type lock prevents the door from being opened accidentally.

3 and 4 sided mounting frames for complete flush integration are available.

INOX version comes with stainless steel door, mounting frame and handle as standard.

The optional Universal AC/DC kit allows for auto switching of power supply automatically when AC power is available.

Product features:

- High-tech design
- Easy user friendly access
- Freezer compartment
- Blue LED interior light
- Robust Blum drawer slides
- Off-shore type lock for perfect closure at any time

Technical Specifications

Type	Volume (L)	Dimensions H x W X D mm	Weight (kg)	Power consumption* W/24Hrs	Compressor Parts
DR 16	16	250 x 380 x 540	12.6	249	BD1.4F
DR 30	30	260 x 440 x 700	18	648	BD1.4F
DR 49 INOX	49	520 x 400 x 510	18	400	BD35F
DR 55 frost -free FREEZER INOX	55	526 x 470 x 560	26	740	BD35F
DR 65 INOX	65	526 x 470 x 545	28	470	BD35F
DR 65 frost-free INOX - FRIDGE ONLY	65	526 x 470 x 560	28	320	BD35F
DR 70 FRIDGE ONLY	70	444 x 627 x 724	30	295	BD35F
DR 70 FREEZER ONLY	70	444 x 627 x 724	30	800	BD50F
DR 85 INOX	85	625 x 495 x 545	32	370	BD35F
DR 130 INOX	130	745 x 545 x 545	35	429	BD35F
DR 190 INOX	190	800 x 900 x 545	44	700	BD50F

* Power consumption W/24hr in operation at 12V with +5°C in the refrigeration space, ambient temperature +25°C

01/19 • Errors and omissions excepted • Printed in Australia • © Webasto Thermo & Comfort Australia Pty Ltd



DR 16 FRIDGE / FREEZER



DR 70 FRIDGE / FREEZER

Isotherm Refrigeration

DRAWER 16



The ultra compact DRAWER 16 can be configured as either a fridge or freezer, and the user can select the intended function via the digital display.

The bright 3 digit digital display also allows the user to select the desired temperature.

The SECOP BD Micro Compressor is specifically designed for maximum efficiency, reliability and minimised installation space. The compressor itself is mounted on an “L” bracket on the back of the fridge. It is also possible to mount the compressor to the right, left and top, or remotely.

The Drawer door is made from AISI 304 stainless steel silver painted and supported by AISI 304 stainless steel rails.

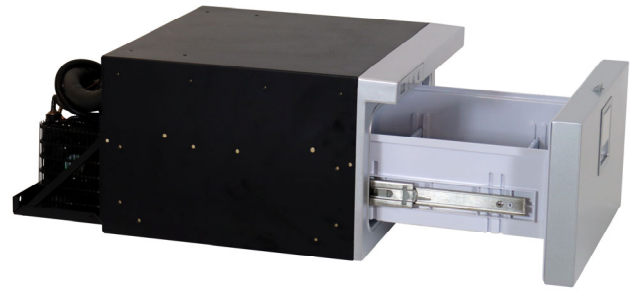
The unit is delivered without a fixing frame, however a 3 or 4 sided flush flange is available as an option.

Product features:

- User can select Fridge or Freezer function
- Temperature range – 6°C ~ +10°C
- Easy to use Digital display
- AISI 304 Stainless Steel rails & AISI 304 Stainless Steel silver painted door
- New SECOP BD Micro compressor
- Splash-proof IPX5 front protection with built in installations
- Multiple installation options

Technical Specifications

Volume (L)	16
Dimensions (HxWxD mm)	250 x 380 x 540
Net Weight (Kg)	12.6
Climatic Class	ST
Compressor Parts	BD1.4F-FSD / 101N2500
Rated Voltage (V)	DC 12 / 24
Rated Power Input (W)	45
Power Consumption (kW/h) at 25°C	0.25/24
Temperature Control	Digital display
Refrigeration Performance in climatic class ST	-6°C ~ +10°C
Finish	Silver painted with optional stainless frame
Warranty	2 years



Isotherm Refrigeration

DRAWER 30



The ultra compact DRAWER 30 is available in two versions, silver finish or black finish.

The bright 3 digit digital display allows the user to select the desired temperature.

The SECOP BD Micro Compressor is specifically designed for maximum efficiency, reliability and minimised installation space. The compressor itself is mounted on an “L” bracket on the back of the fridge. It is also possible to mount the compressor to the right, left and top, or remotely.

The silver version Drawer door is made from AISI 304 stainless steel silver painted and supported by AISI 304 stainless steel rails.

The black version has a steel door and rails.

The unit is delivered without a fixing frame, however a 3 or 4 sided flush flange is available as an option.

Product features:

- Easy to use Digital display
- AISI 304 Stainless Steel rails & AISI 304 Stainless Steel silver painted door
- SECOP BD Micro compressor
- Splash-proof IPX5 front protection with built in installations
- Multiple installation options

Technical Specifications

Volume (L)	30
Dimensions (HxWxD mm)	260 x 440 x 700 *250H without feet
Net Weight (Kg)	18
Climatic Class	T
Compressor Parts	BD.1.4F-FSD / 101N2500
Rated Voltage (V)	12/24
Rated Power Input (W)	45
Power Consumption (kW/h) at 25°C	0.27kW/h/24h
Temperature Control	5°C - 10°C
Finish	Silver or Black
Warranty	2 years



Isotherm Refrigeration

DRAWER 70 INOX CLEAN TOUCH



The DR70 Inox Clean Touch is the premium front -opened drawer solution with a door in stainless steel especially treated to avoid fingerprints. This new material combines a state of the art marine design with easy cleaning and maintenance of the refrigerator. It is provided with a robust drawer mechanism, 5 blue led lights and internal baskets, to provide great comfort in use.

The 3 sides stainless steel flange allows an easy recess in furniture, as well as the remote compressor option facilitate the compressor location up to 1.1mt away from the cabinet.

It is available in two different versions, as fridge or freezer.

Product features:

- Practical Elegance line handle
- Stainless Steel Clean Touch
- Available as Fridge or Freezer
- Robust drawer mechanism with adjustable internal baskets
- Integrated blue LED light

Technical Specifications

	Fridge	Freezer
Volume (L)	70	
Dimensions (HxWxD mm)	444 x 627 x 724	
Net Weight (Kg)	30	
Compressor Parts	BD35F	DB50F
Rated Voltage (V)	12/24	
Rated Power Input (W)	72	
Power Consumption (kW/h) at 25°C/24hr	295	800
Freezer compartment		(-12°C)
Warranty	2 years	



Isotherm Refrigeration

DRAWER 85 and 130 INOX



DRAWER 85 INOX

The Drawer 85 and Drawer 130 are a stainless steel refrigerator with built in freezer drawer. The main drawer door mechanism utilises robust high quality Blum rails.

Both models contain a bottle rack on the main door, 2 inner drawers, with the top drawer being the freezer (freezer at -6°C).

The internal drawers and modular shelves ensure maximum practicality, great storage and allows clear visibility of contents.

The main drawer is completely removable to ensure simple cleaning of the refrigerator, for spills and hygiene.

The main drawer also has a removable divider.

Product features:

- Elegant stainless steel design
- Stainless steel flushing mounting frame for complete flush integration
- Easy access and visibility of contents
- 5 blue LEDs as internal light
- Large internal drawer freezer compartment
- Bottle rack on main door
- Inner drawers & modular shelves ensure maximum practicality
- High quality robust BLUM rails
- Main drawer and divider completely removable for cleaning

Technical Specifications

	DR 85 INOX	DR 130 INOX
Volume (L) - gross capacity	83.9	120
Volume (L) - net capacity	63.4	89
Volume (L) - Freezer (top drawer) at -6°C	9.2	10
Dimensions (HxWxD mm)	625 x 495 x 545	745 x 545 x 545
Depth (mm) with optional AC/DC kit	555	555
Net Weight (kg)	32	35
Voltage (V)	12/24	12/24
Power Consumption (W/24h)	370	429
Compressor Parts	BD35F	BD35F



DR 130 INOX - BOTTLE RACK



DR 130 INOX

Isotherm Refrigeration

FREELINE 115 ELEGANCE



The Freeline 115 Elegance fridge freezer provides a total capacity of 115L, which includes 83L of fridge space and a full width 32L freezer compartment.

The fridge interior contains 2 shelves with 3 rails in the cabinet, 1 vegetable bin and a bottle compartment on the door.

A flush mounted internal LED Control Panel acts as both an interior light and control panel display, providing blinking codes for fault notification.

With a centrally located door handle, it is easy to change the door opening side from left or right hinged.

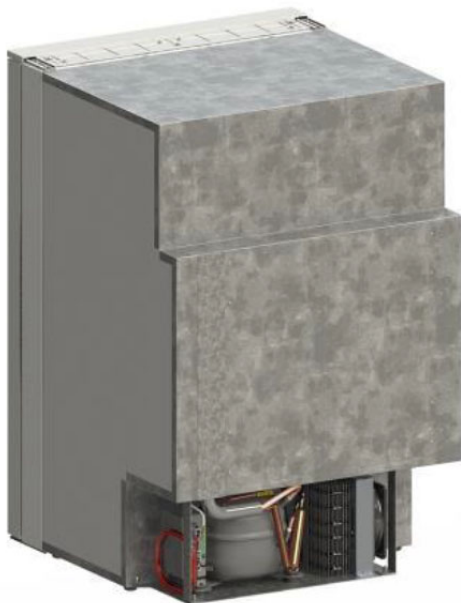
The SECOP BD35F compressor is located on the lower back side of the cabinet to gain more space in the evaporators area and to provide additional on-board comfort by shielding noise from the compressor.

Product features:

- 12/24V Compressor Fridge and Freezer
- 83L Fridge / 32L Freezer
- Centrally located door handle
- Internal LED flush mounted Control Panel
- Intelligent Temperature Control (ITC) / ECO function
- 25mm thick outer walls for optimal insulation
- Door thickness 50mm
- Sub Tropical rated- ambient temperature range +16°C to +38°C
- Secop Compressor
- Full width freezer compartment

Technical Specifications

Volume (L) - total capacity	115
Volume (L) - Fridge	83
Volume (L) - Freezer (at -6°C)	32
Dimensions (HxWxD mm)	801 x 525 x 495
Net Weight (kg)	30
Voltage (V)	12/24
Power Consumption (W/24h)	267
Compressor Parts	BD35F



Isotherm Refrigeration

CRUISE 195 CLASSIC



The Cruise 195 Classic is a two door fridge-freezer solution combining a 130L fridge and a 65L freezer.

The refrigerator comes with interior light contains 2 shelves, 1 vegetable bin and bottle compartments on the door.

The CR195 Classic is equipped with two fan-cooled compressors, separate thermostats for the fridge and freezer sections and is delivered with a flush mounting frame.

Product features:

- 12/24V Compressor Fridge and Freezer
- 130L Fridge
- Side mounted door handles/latches
- Internal fridge light
- Sub Tropical rated- ambient temperature range +16°C to +38°C
- Freezer 65L at -18°C

Technical Specifications

Volume (L) - total capacity	195
Volume (L) - Fridge	130
Volume (L) - Freezer (at -18°C)	65
Dimensions (HxWxD mm)	1345 x 550 x 580
Net Weight (kg)	51
Voltage (V)	12/24
Power Consumption (W/24h)	840
Compressor Parts	BD35F x 2

imfort Australia Pty Ltd



Isotherm Refrigeration

INOX COMBI



INOX Combi 260

Cruise 130 Drink on top of a Drawer
130 Fridge
(with internal freezer drawer)

The INOX Combi Line of refrigeration is a series of modular solutions offering large inner capacity combined to create flexibility in product selection.

Due to the modular concept, different combinations can be achieved with a range of stainless steel look refrigerators and freezers, completed with a matching flush mounting frame.

A hybrid mix is now possible - combinations available are Fridge, Fridge/Freezer, Freezer or Freezer plus Ice Maker.

Available as 195L, 220L, 260L and 320L models.

INOX Combi 195:

Cruise 130 Drink on top of a Cruise 65 Freezer.

INOX Combi 220:

Cruise 130 Drink on top of a Cruise 90 Freezer.

INOX Combi 260:

Cruise 130 Drink on top of a Drawer 130 Fridge.

INOX Combi 320:

Cruise 160 Inox on top of a Drawer 160 Fridge, or Freezer, or Fridge/Freezer with Ice Maker.

Product features:

- Modular concept
- DC or AC/DC versions
- Right or Left hinged doors
- 3 side flush mounting frame as standard
- 4 sided lower flush frame optional
- Secop double compressor technology for maximum performance

Technical Specifications

Type	Volume (L)	Dimensions H x W x D mm	Weight (kg)	Power consumption W/24Hrs
INOX Combi 195	130 + 65	1345 x 545 x 580	51	400 + 440 = 840
INOX Combi 220	130 + 90	1545 x 545 x 560	59	400 + 550 = 950
INOX Combi 260	130 + 130	1545 x 545 x 560	64	400 + 429 = 829
INOX Combi 320	160 + 160	1790 x 628 x 610	85	530 + 1100 = 1630 * 530 + 530 + 1060 #

* on versions with DR160 freezer/freezer, fridge/freezer and fridge/freezer + ice maker
with DR160 fridge only

fort Australia Pty Ltd



INOX Combi 195
Cruise 130 Drink on top
of a Cruise 65 Freezer



INOX Combi 220
Cruise 130 Drink on
top of a Cruise 90
Freezer



INOX Combi 320
Cruise 160 INOX on top of
a Drawer 160 fridge or
freezer or fridge/freezer +
ice maker

Webasto Thermo & Comfort Australia Pty Ltd

423-427 The Boulevard, Kirrawee NSW 2232 Australia

Ph: +61 (0)2 8536 4800

svc-info@webasto.com

www.webasto.com