

For over a century, Webasto has continued to set new technological standards – in both the original equipment sector and the aftermarket. As one of the 100 biggest suppliers in the automotive industry worldwide, we develop and produce roof, convertible as well as heating, cooling and ventilation systems. Our products help provide a better atmosphere on the road, more comfort and security, as well as increased efficiency for cars, commercial and special vehicles, motor homes and boats. An outstanding network of production facilities and dealers guarantees high-quality products, installation standards and services worldwide.

Ident-No. MK11010 • 03/13 • Errors and omissions excepted • Printed in Germany • © Webasto Thermo & Comfort SE, 2013

## Reliable temperature control, increased productivity, enhanced durability

Professional climate solutions for commercial boats





# Efficient climate control: Webasto stands for 110 years of experience in climate solutions

A commercial boat should offer one thing above all else: a good working environment, a sense of security, high performance and reliability.

Since 2005 Webasto has been investing heavily in the marine market. Leveraging on its core automotive technologies, Webasto has continuously enlarged its marine product portfolio and has attained the unique position of being able to deliver complete climate control solutions for heating, cooling, light and fresh air.

This high quality product offering turns out to be a decisive competitive advantage in the market.

### Under extreme weather conditions

High temperatures during the summer as well as low temperatures during the winter months or in arctic regions, have a high impact on health, performance and productivity.

With this in mind, Webasto offers solutions for navy, commercial and work boats. Our dedicated highly skilled engineering team supports you over our worldwide service network.

**Marine is our passion. Just as it is yours.  
Enjoy the water with us!**

### You are looking for:

- Reliable temperature control
- Increased productivity
- Safe operating conditions
- Instant availability
- Enhanced durability and product reliability

### We offer:

- High performing and uniquely integrated heating & cooling systems
- Personalized solutions for individual customer needs
- [www.webasto.com](http://www.webasto.com)

## A path of marine innovations



**1950 Heaters:**  
Popular Webasto heaters already used in marine applications.



**2006 Integrated solutions:**  
Combining heating & cooling into intelligent climate control solutions.

**2008 Founding of Indel Webasto Marine:**  
Marine refrigeration products.



**2009 High-tech controls:**  
Intuitive touch screen panel for the central control of climate solutions.



**2011 New additions to our customizable roof platforms:** 20-series, soft tops and windows.



**2013 Introduction of new chiller systems:** BlueCool C-Series.



**2005 Air-conditioners:**  
Product range extension with air-conditioners.



**2007 Roofs:**  
Webasto presents roof platforms where size, curvature and design can be customized.

**2010 New water stations:**  
High capacity central heating units for professional applications.



**2012 Introduction of new self-contained units:** BlueCool S-Series.





## Air-conditioning solutions: Enjoy the refreshing feeling of an air-conditioned cabin

Our large product portfolio of self-contained air-conditioning systems up to large chiller systems leaves nothing to be desired. With our wide power range, we provide cooling capacities from

5,000 BTU/h up to 572,000 BTU/h. It is up to you to decide which technology is best suited for your boat and needs.

### Self-contained units

Self-contained cooling units are the best solution for boats with up to three cabins. Every cabin is equipped with one unit which is dimensioned according to the cabins cooling/heating demand.

### Chiller systems

For larger boats with several cabins, a central chilled water system is often the best choice. It consists of a chiller A/C unit which is typically installed in the engine room and individual air handlers for each cabin. This system allows an individual temperature control for each cabin.



*BlueCool S-Series*



*BlueCool C-Series*



*BlueCool Premium*

# Self-contained units: The new BlueCool S-Series

## Perfect to cool down smaller volumes with limited power consumption

Self-contained cooling units are the best solution for boats limited in space and/or by board power. Every cabin or area is equipped with one unit which is dimensioned according to the cooling/heating demand. It is regulated by a digital control unit which is also located in this cabin.

The heat is transferred into the sea via the sea water circuit. This option is perfect to cool down crew cabins or heavily heat loaded rooms (e.g. where electronic equipment is stored etc.)

## New BlueCool S-Series

Our new BlueCool S-Series come with various upgrades. The complete reworked range offers even higher performance although the units are quieter and more compact. The new S-Series offer a unique new feature with the diagnosis tool connected via a single USB cable and a PC. On site servicing and remote assistance are now a child's play.



**NEW**



BlueCool S-Series



Digital control panel

### The new BlueCool S-Series:

- Efficiency increased up to 15 %
- Continuous operation even under tropical conditions
- Overall size is reduced up to 20 %
- New electronics with USB diagnosis
- Quiet operation
- Robust design
- Soft start devices available as an option

### Technical specifications:

Model	BlueCool Classic	BlueCool S-Series					
	SC5	S8	S10	S13	S16	S20	S27
Cooling capacity (BTU/h)*	5,000	8,000	10,000	13,000	16,000	20,000	27,000
Supply voltage (V)	230	230	230	230	230	230	230
Current draw running** (A)	1.7 – 2.4	2.4 – 3.5	2.6 – 4.0	3.6 – 6.3	4.9 – 7.2	5.9 – 8.9	7.0 – 10.5
Cooling capacity (kW)	1.4	2.3	2.9	3.8	4.7	5.9	7.9
Blower output*** (m³/h, cfm)	275 162	275 162	400 235	500 294	625 368	625 368	2 x 550 2 x 324
Sea water connection (mm/“)	16 5/8	19 3/4	19 3/4	19 3/4	19 3/4	19 3/4	19 3/4
Minimum sea water flow (l/min.)	5	8	10	12	13	17	21
Dimension L x D x H (mm/inch)	424 x 285 x 278 16.7 x 11.2 x 10.9	313 x 400 x 301 12.3 x 15.8 x 11.9	310 x 475 x 310 12.9 x 18.5 x 12.0	355 x 500 x 320 14.0 x 19.8 x 12.6	360 x 540 x 330 14.1 x 21.2 x 13.0	340 x 590 x 370 14.2 x 23.2 x 14.3	510 x 570 x 390 20.0 x 22.5 x 15.4
Diam. air outlet (mm/inch)	100 4	100 4	100 4	125 5	125 5	125 5	2 x 125 2 x 5

\* BTU/h are based on 7°C evaporating temperature and 38°C condensing temperature

\*\* Amperage values depend on compressor load. Max values stated for tropical conditions at 230 V/50 Hz \*\*\* Free blowing



# Chiller systems: New BlueCool C-Series

The chiller air-conditioners are available in a large power range to fit any boat or vessel type. The systems are available customized or modular for special applications. These units offer the best cabin comfort because they enable you to provide the required amount of cooling and heating wherever needed. They are also the ideal basis for our integrated systems (see page 20).

For smaller chiller systems up to 108,000 BTU/h, the new BlueCool C-Series is the perfect choice. For larger systems, the BlueCool Premium series offer capacities up to 572,000 BTU/h.



**NEW**



Digital control panel

BlueCool C-Series

- The new BlueCool C-Series:
- Improved performance and up to 15 % higher efficiency
  - Continuous cooling capacity even in tropical conditions
  - Even more compact design
  - New improved electronics for easy installation and diagnosis via USB cable
  - Optional CAN-Bus for optimized adaptation to boat systems
  - Compressor noise is reduced by up to 25 %
  - Easy sea water and chilled water connections at one side
  - Strong stainless steel tray and condensate drain
  - Cooling and heating via reverse cycle function as standard
  - High quality Epoxy paint protection
  - Vibration dampers available as an option
  - Soft start devices available as an option
  - 50/60 Hz worldwide compatibility

Technical specifications:

Model	BlueCool C-Series							
	C16 M	C20 M	C27 M	C32 T	C40 T	C55 T	C81 R	C108 Q
Cooling capacity (BTU/h)*	16,000	20,000	27,000	32,000	40,000	55,000	81,000	108,000
Cooling capacity (kW)	4.7	5.9	7.9	9.4	11.7	16.1	23.7	31.7
Number of compressors	1	1	1	2	2	2	3	4
Supply voltage (V)	230	230	230	230	230	230	230	230
Current draw running (A)**	4.4 – 6.0	6.9 – 8.0	8.6 – 9.2	8.8 – 12.0	13.8 – 16.0	17.2 – 18.4	25.8 – 27.6	34.4 – 36.8
Net weight (kg)	30	30	40	77	80	90	140	175
Dimension L x D x H (mm/inch)	385 x 290 x 350 15.2 x 11.4 x 13.8	440 x 320 x 365 17.3 x 12.6 x 14.4	440 x 340 x 400 17.3 x 13.4 x 15.7	530 x 400 x 490 20.9 x 15.7 x 19.3	530 x 400 x 490 20.9 x 15.7 x 19.3	530 x 400 x 550 20.9 x 15.7 x 21.7	750 x 420 x 550 29.5 x 16.5 x 21.7	530 x 800 x 550 20.9 x 31.5 x 21.7

\* BTU/h are based on 7°C evaporating temperature and 38°C condensing temperature  
 \*\* Amperage values depend on compressor load. Max values at tropical conditions stated for 230 V/50 Hz

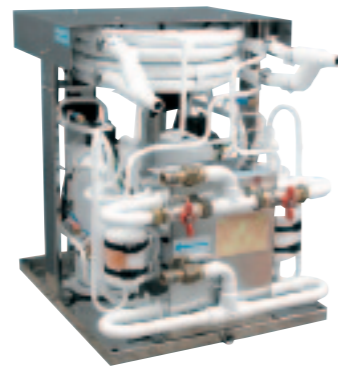
# Chiller systems: BlueCool Premium

Webasto BlueCool Premium chiller air-conditioning systems are provided with a complete set of outstanding features. Starting with an extremely compact dimension and epoxy painted components that are pre-mounted on one single stainless steel tray. Furthermore, the system counts on bi-frequency operating compressors, which gives full flexibility for changing power supply conditions via generator or shore power. By providing fully independent cooling loops in multiple compressor units and giving the possibility to adapt the performance continuously to the individual demand, Webasto represents high quality air-conditioning for every need.

To suit larger generator sets installed on commercial boats, Webasto chiller air conditioners are supplied in 400 V 3 phase as well.



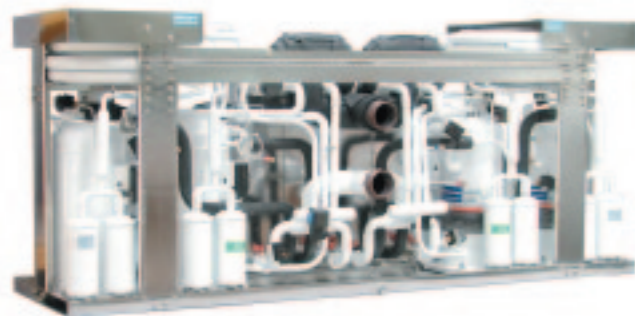
Mono Chiller



Twin Chiller



Triple Chiller



Quatro Chiller

### The BlueCool Premium:

- Wide product range for medium and large size boats
- Scroll compressors for heavy duty applications
- Low starting surge through staged compressor starts
- 208 V, 230 V and 400 V systems available
- Many customization options with different electronics, tropical versions, vibration damping and many other features
- Optional heating via reverse cycle function available for various models
- Fully independent cooling circuits in multiple compressor units provide high system availability
- Power output continuously adapted to cooling demand
- Very robust stainless steel design for heavy duty use

### Options for A/C units

#### Soft start-up option

- Reduces compressor starting current by up to 40 %
- Eliminates the damaging effects of high starting torque surges
- Allows to run more electrical consumers in parallel to the A/C system

#### Electrical box for commercial boat applications

- Electrical box for commercial boat applications according to MCA standards
- High customization options: Please contact us directly in order to choose the right solution

#### Further options

- For extremely hot environments, Webasto offers many A/C units with enlarged (tropical) sea water condenser for effective air conditioning on board. Please contact us directly for professional consulting
- Webasto also can provide all accessories for completely pressurized systems

### Technical specifications:

Type	BlueCool Premium-Series			
	CH30-MONO – CH60-MONO	CH60-TWIN – CH96-TWIN	CH108-TRI – CH252-TRI	CH120-QTT – CH572-QTT
Cooling capacity (BTU/h)	30,000 to 60,000	60,000 to 96,000	108,000 to 252,000	120,000 to 572,000
Supply voltage (V)	230/400	230/400	230/208/400	230/208/400
Current draw running (A)	10.6 – 16.7 (230 V) 3.5 – 7.1 (400 V)	21.3 – 33.3 (230 V) 7.1 – 11.0 (400 V)	38.7 – 50.0 (230 V) 12.8 – 30.3 (400 V)	42.5 – 58.0 (230 V) 14.1 – 60.9 (400 V)
Net weight (kg)	55 to 75	95 to 130	150 to 260	190 to 725





## Fresh air units & air handlers: Broadest range to fit any demand

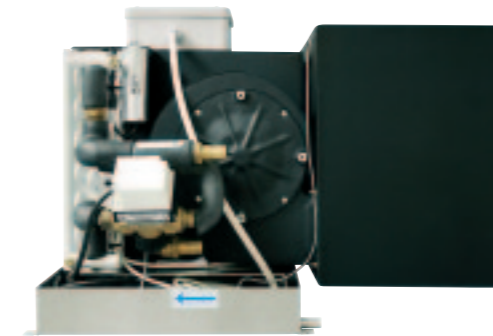
Webasto offers a wide range of fresh air units and air handlers. You can choose from our different options and designs to fit your precise needs. Additionally to horizontal and vertical layouts, accessories such as bleeder kits or the electronic silencer are available for significant reduction of blower noise.

### Your advantages

- Many types of air handlers available to fit into all sorts of installation spaces
- Easy to install and retrofit as an upgrade
- Allows fine-tuning of installed applications where necessary
- Various power ranges and design options (electrical heating coils or 3-way-valves available as an option)



*Air handler*



*Fresh air unit*





## Air handlers



Compact

**Compact air handler**  
available from  
4,500 BTU/h up to 48,000 BTU/h



SlimLine / V

**SlimLine air handler / vertical**  
available from  
4,500 BTU/h up to 24,000 BTU/h



TAN / H

**Cross flow air handler / horizontal**  
available from  
4,000 BTU/h up to 12,000 BTU/h



TAN / V

**Cross flow air handler / vertical**  
available from  
4,000 BTU/h up to 12,000 BTU/h



SlimLine / H

**SlimLine air handler / horizontal (top view)**  
available from  
4,500 BTU/h up to 24,000 BTU/h

### The electronic silencer

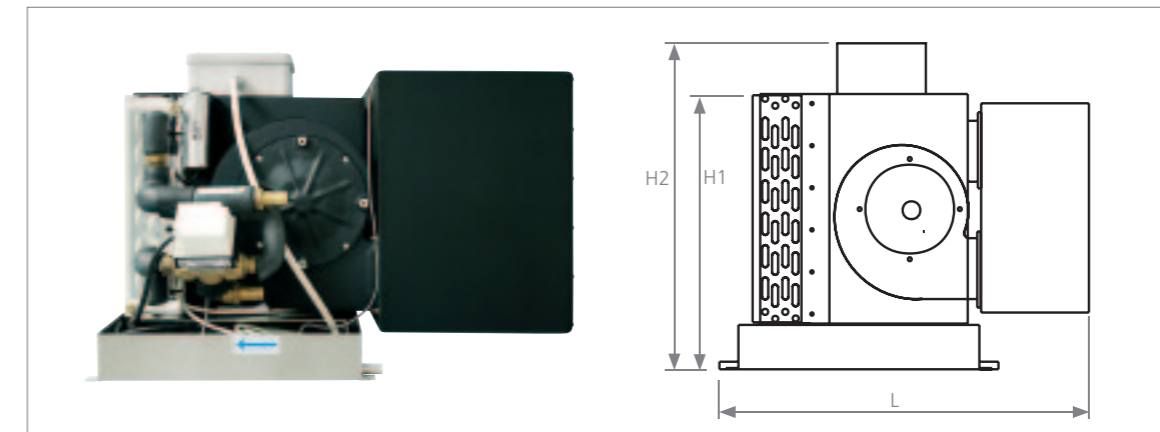
- Significant reduction of blower noise in low speed levels, making the air handler whisper quiet
- Works with all our air handler models due to simple integration into the power supply
- Easy to install and retrofit as an upgrade
- Allows fine-tuning of installed applications where necessary



## Fresh air units

### Because the right amount of O<sup>2</sup> makes the difference in well being!

- Regulate fresh-air entry into the vessel by temperature differential outside/inside and combined air extraction control.
- 2-stage integrated reheat (A/C electrical) provided.
- Electronic controller provides two separate blower outlets: one for fresh-air input and one for extraction air out. (Different speed settings possible for both outlets.)
- Special flow regulators allow easy and precise balancing of outputs per volume.
- Air flow regulators to be specified according to application.
- Integrated Solenoid 3-way-valve control.
- Special start-up procedure to eliminate residual moisture in system.
- Three temperature read-outs:
  - Outside air temperature
  - Chilled water circuit temperature
  - Treated air input temperature
- Individual cabin in-line air extraction units available on demand.



Fresh Air Unit	Performance (BTU/h)	Volume (m <sup>3</sup> /h)	Length (L)	Height (H1)	Height (H2)	Depth (D)	Weight (kg)
Fresh Air 24	24,000	900	700	430	540	585	35
Fresh Air 24 SP	24,000	1,800	700	430	540	585	35
Fresh Air 48	48,000	1,800	850	512	565	925	45
Fresh Air 2 x 24	48,000	1,800	940	490	570	620	48
Air Extraction Unit		Volume (m <sup>3</sup> /h)	Length (L)	Height (H1)	Height (H2)	Depth (D)	Weight (kg)
Extract 900	–	900	515	435	–	585	18
Extract 1800	–	1,800	515	435	–	615	21





## Cabin heating solutions: Reliable temperature control no matter the weather outside

Heaters are a longstanding tradition at Webasto. For more than 80 years, we have been at the cutting edge when it comes to the development of fuel-fired heating technology. Every day, leading automotive manufacturers and boat builders rely on the advanced design and technology of our Webasto heaters.

Along with specific marine installation kits, we deliver innovative high-quality air and water heaters, which contribute to the enhancement of comfort on board. These two technologies provide economical, powerful and reliable

solutions to our customers, with heating outputs ranging from 2 kW up to 35 kW. There is a Webasto heating solution for every need.

### Air heaters

Air heaters quickly deliver warm air throughout the boat via an air ducting system. They are very compact and easy to retrofit.

### Water heaters

Water heaters are the best solution for even distribution of warmth, as you have at home. They can also be connected to domestic water boilers and to A/C chiller systems for complete climate solutions.



*Air heater*



*Water heater*

# Air heaters

## Air Top 2000 ST

Quiet comfort, smallest heater on the market, excellent heat output and optimal economy.

## Air Top Evo 3900

Robust and powerful, high-output, safe, ideally suited for the most rigorous requirements.

## Air Top Evo 5500

For extreme conditions, powerful, robust and safe, ensures a comfortable climate for larger boats – even under extreme conditions.

## HL 90

The most powerful air heater for passenger and commercial boats with large cabin volumes. Short heating-up times, low operating costs and simple to install.



Air heater

Air Top Evo M

ThermoCall App

### Advantages at a glance

- Robust composite casing, resistant to high temperature or salt
- Very low electrical power and fuel consumption
- High air flow output due to powerful radial blower
- Continuous heating power output provides exactly the heating energy needed
- Quiet operation
- Precise electronic temperature control system maintains a constant cabin temperature
- Sealed control electronics and connectors withstand marine environment
- Fresh-air or re-circulated air intake due to powerful radial blower
- Excellent diagnosis features

### Technical specifications:

Model	Air Top 2000 ST	Air Top Evo 3900*	Air Top Evo 5500*	HL 90
Heat output (kW)	0.9 – 2.0	1.5 – 3.5 (3.9)	1.5 – 5.0 (5.5)	6.5 – 9.0
Fuel, fuel consumption (l/h)	Diesel, 0.12 – 0.24	Diesel, 0.19 – 0.45 (0.49)	Diesel, 0.19 – 0.63 (0.69)	Diesel, 0.89 – 1.20
Rated voltage (V)	12	12/24	12/24	24
Rated power consumption (W)	14 – 29	15 – 40 (55)	15 – 95 (130)	94 – 160
Net weight (kg)	2.6	5.9	5.9	13.3
Dimension L x W x H (mm)	311 x 120 x 121	423 x 148 x 162	423 x 148 x 162	650 x 235 x 260

\* Air Top Evo 3900 and Air Top Evo 5500 deliver the boosting power of 3,900 or 5,500 W only in combination with the Air Top Evo M user interface. Technical specifications are subject to change without prior notice.

Now available: New improved extra-silent marine air heater kits.

# Water heaters

## Thermo 90 ST

State-of-the-art controller and easy service: ideal for daily uses, multiple temperature adjustment, high heat output, robust, safe, compact dimensions, service friendly technology and a low noise level.

## DBW 2010/2016 water heater:

This robust and powerful water heater is suitable for demanding applications.

## Thermo 230/300/350

For high heating power. It is suitable for large boats and has the power to keep every corner of the boat warm and independent of weather conditions.



Water heater

Digital Timer

ThermoCall App

### Advantages at a glance

- Heating comfort just like at home
- Can be used to heat your hot sanitary water
- Space-saving installation in the engine room
- Automatic overheat protection
- Even distribution of warmth by means of radiators or blowers
- Excellent possibilities for combining with Webasto BlueCool air-conditioning systems
- Low fuel consumption

### Technical specifications:

Model	Thermo Top E	Thermo Top C Thermo 50	Thermo 90 ST Marine*	DBW 2010** DBW 2016**	Thermo 230**	Thermo 300** Thermo 350**
Heat output (kW)		2.6/5.2	1.8 – 7.6	11.6		30
Partial load/Full load	2.5/4.2	2.2/5.0	(boost mode 9.1)	16	23	35
Fuel, fuel consumption (l/h)		0.36 – 0.73	Diesel, 0.23 – 1.08	Diesel, 1.57		Diesel, 4.0
Partial load/Full load	Diesel, 0.36 – 0.59	0.36 – 0.73	(boost mode 1.33)	Diesel, 1.81	Diesel, 3.0	Diesel, 4.5
Voltage (V)	12	12	12/24	12/24	24	24
Power consumption (W)		32/42 (with circulation pump)		60 (without circulation pump)		90 (without circulation pump)
Partial load/Full load	32/37 (with circulation pump)	34/50 (with circulation pump)	37 – 83 (boost mode 90)	90 (without circulation pump)	65 (without circulation pump)	120 (without circulation pump)
Net weight (kg)	3.2	3.2	4.8	14.5	19	19
Dimension L x W x H (mm)	214 x 106 x 168	214 x 106 x 168 237 x 106 x 193	355 x 133 x 232	564 x 205 x 228 564 x 205 x 228	610 x 246 x 220	610 x 246 x 220 610 x 246 x 220

\* Thermo 90 ST regulates stepless. \*\* Values for full load. Technical specifications are subject to change without prior notice.



# BlueComfort integrated solutions: When you are looking for full performance in all weather conditions

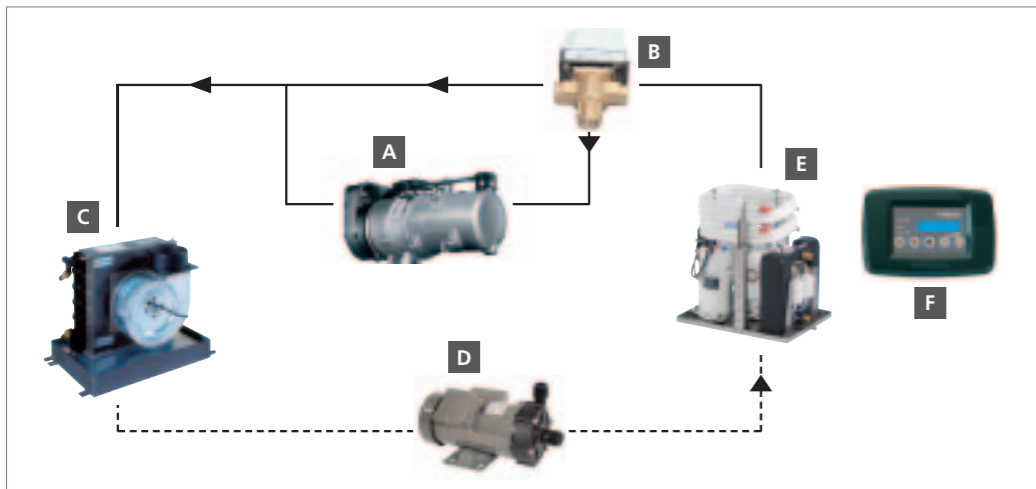
## BlueComfort Premium

The BlueComfort Premium system integrates a chilled water air-conditioner unit and a diesel-operated heater into one system. The use of a water heater ensures full heating performance, even at low seawater temperatures, when the reverse cycle of an air-conditioner gets inefficient (below 6°C). In this integrated system the same water piping, air handlers, air ducting and cabin temperature control modules are used for both heating and A/C operation. The system is controlled via one control panel, making the activation of A/C or heater totally transparent to the end-user.

## BlueComfort Classic

In a BlueComfort Classic system a special self-contained unit and a water heater are integrated into one system. The A/C units are equipped with a second heat exchanger which is connected to a diesel-fired water heater. In cooling mode, the water heater is off and only the A/C circuit is running. In heating mode, the water heater operates, heating up the heat exchanger and forcing the air to pass through. In the "reheat" mode, the air is first cooled down, then heated up again, thus being dehumidified.

### Example of a Webasto BlueComfort Premium Basic integration:



- A** Water heater produces hot (60°C) water when system switches to heating
- B** 3-way-valve switches between cooling or heating loop
- C** Air handler warms up or cools down the cabin air
- D** Water pump circulates the water
- E** A/C chiller unit cools down the water when system switches to cooling
- F** Chiller control controls the complete A/C system and the water heater; starts the compressor when cooling is necessary; starts the heater when heating is necessary

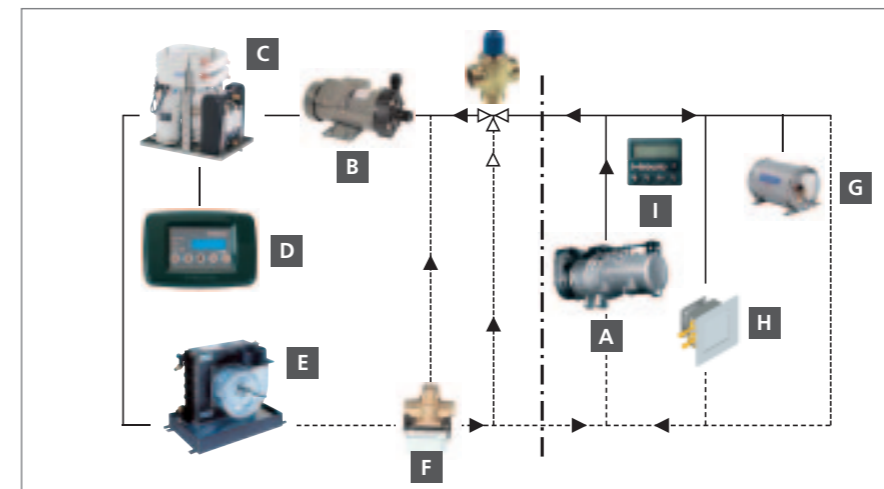
### Convincing facts:

- Super quick warm-up of cabin, independently of sea water temperature
- Flexible control system operation
- Unrivalled dehumidification power
- Modular concept allowing multiple configurations
- Full range of solutions for any size of boat
- Cost-efficient application due to component sharing for heating and cooling

## BlueComfort Premium DeLuxe integration

The DeLuxe has all the features of the Basic integration but additionally allows to integrate a water boiler as well as further fan blowers or radiators into the system. It therefore provides the highest comfort in heating and sanitary water supply. The mixing valve limits the water temperature in the A/C loop to 60°C. A summer/winter switch allows to heat the boiler in summer while the A/C system is cooling the cabins at the same time.

### Example of a Webasto BlueComfort Premium DeLuxe integration:



- A** Water heater produces hot (60°C) water when system switches to heating
- B** Water pump circulates the water
- C** A/C chiller unit cools down the water when system switches to cooling
- D** Chiller controls the complete A/C system and the water heater; starts the compressor when cooling is necessary; starts the heater when heating is necessary
- E** Handler warms up or cools down returning air
- F** 3-way-valve switches between cooling or heating loop
- G** Water boiler heats up the sanitary water
- H** Blowers or radiators can optionally be used in areas with extra high heating demand (e.g. windscreen for demisting)
- I** Summer/Winter switch allows separate boiler operation in summer mode



## The next generation of control elements

This unique Webasto comfort control system provides a central interface for the complete Webasto climate system. Operation and service of comfort systems have never been easier. Integration of the software into the overall central control system of the boat is also possible.

### Advantages at a glance:

- Innovative touch screen
- Comfort for all cabins can be centrally controlled via CAN bus
- User-friendly interface
- Easy access to information for quick and easy service
- Register of incidents for remote diagnosis

### Technical specifications:

- 5.7 TFT color display
- VGA (640 x 480 pixel) resolution
- Sunlight-readable (350 cd/m<sup>2</sup>)
- IP water protection values: IP 67 Front and IP 66 Rear
- CE and RINA certification



## Water stations & boilers

Producing hot water for sanitary purposes is also important for comfort on board. Among multiple solutions provided by Webasto we can highlight the following:

### Marine water stations



- Four versions in five capacity sizes (11.6 to 35 kW):
  - Central heating
  - Central heating and hot sanitary water through boiler
  - Central heating and hot sanitary water through integrated plate heat exchanger
  - Central heating for air-conditioner integration
- Antifreeze mode with electric heating element in buffer tank
- Very compact dimensions
- Operating on 12/24 V
- Quick installation and easy maintenance
- Continuous production of hot water (up to 8.5l/min at 60°C)

### Isotemp: High-quality fully stainless steel water boilers



- Extra long, corrugated coils for high heat exchange efficiency
- Special 7.0 bar / 100 psi safety valve; simple winter drain
- Ultra-thick insulation for lowest temperature loss
- Electrical plug and play
- Immersion heating element, especially designed to heat also the water at the bottom of the tank
- Thermostatic mixing valve available as an option
- Immersion heating elements available in 750, 1,200, 2,000, 3,000 W as an option
- New: Isotemp Spa boilers in plastic casing

For more details and models of water boilers please refer to [www.indelwebastomarine.com](http://www.indelwebastomarine.com)





## Opening new horizons with our customizable roof platform solutions

Light and fresh air are essentials on board a boat. Webasto offers you a wide range of marine roof solutions, to be customized to the shape, size and design of your deck. They benefit from Webasto's worldwide technological leadership in automotive sunroofs.

On top of this broad selection of roof solutions, Webasto's engineering services can do even more for your exclusive, unique roof project. Large moveable surfaces of all kinds and sizes are our mission. Webasto has 30 years experience in advanced automotive roof systems which we apply to marine: kinematics, advanced materials, water management and sealing systems. We turn your ideas into reality and guarantee high quality and outstanding product know-how.

Webasto offers small series manufacturing at full series quality levels: Process-oriented assembly operations, from the pilot line through the design check to series production. Phased project approach and joint teams enable know-how transfer to your engineers.

### The success of our projects is based on three fundamental elements:

**Product visualization:** Translate ideas into visual concepts.  
Phased project approach allows frequent evaluation and limits the customers' risk.

**Product development:** Translate visual into technical concept.  
Joint teams require strong customer involvement (marketing, R&D, manufacturing).

**Product validation:** Prepare drawing package for suppliers and assembly.  
Highly valuable know-how transfer ensures best outcome of the project investments at every stage.

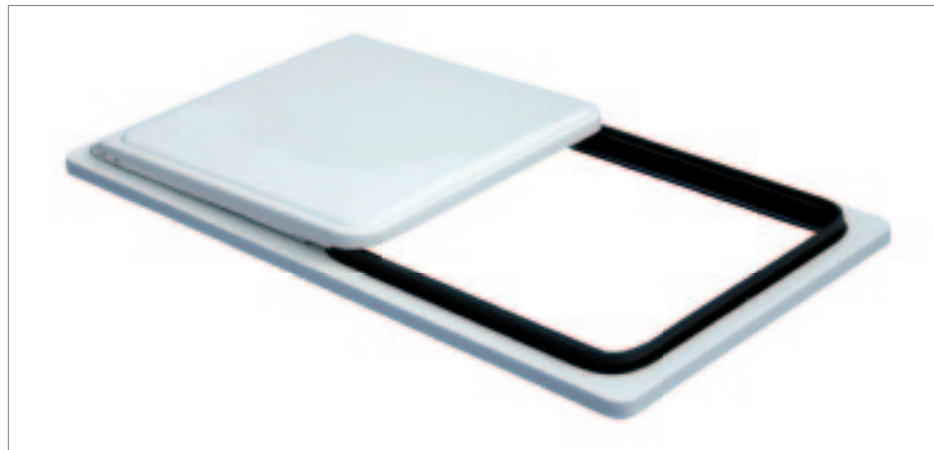
## Webasto utility hatch: Increase the field-of-vision at the workplace

### The quiet solution for fresh air:

This innovative design allows the boat crew to profit from maximal comfort and for improving the field-of-vision while working.

### Product Benefits:

- Opens and closes quietly
- Suitable for ventilation of the cabin
- Made of Acrylonitrile butadiene styrene (ABS)
- Manually operated
- Possibility of enlarged opened space
- Water-proof and robust
- Easy to install
- World- wide service network



Utility hatch

### Technical specifications:

	Utility hatch
Frame material	Aluminium black anodized
Panel material	Acrylonitrile butadiene styrene (ABS) double sheet – white/grey
Overall dimensions L x W (mm)	1,995 x 1,010
Cut-out dimensions L x W (mm)	994 x 940
Height roof closed (mm)	88
Height roof tilted (mm)	117
Operation Mode	Manual
Opening L x W (mm)	800 x 870
Weight (kg)	23

## Webasto 60-Series: The easy, ready-to-be-mounted solution

This series offers multiple customization options for a perfect fit. The roof is delivered fully tested, pre-assembled and ready-to-be-mounted at the shipyard thus resulting in significant cost saving for the boat builder.

- Fully watertight closing
- Very large opening
- Electrical operation
- Smooth automotive style mechanism
- Robust and proven construction



The 60-Series: The easy, ready-to-be mounted solution

### Technical specifications:

	60-Series
Variants	Top mount or flush integration
Maximum cut out dimensions L x W (mm)	1,800 x 1,100 x 1,100 x 1,500
Minimum cross curvature R (mm)	7,500
Corner radius R (mm)	80
Options Panel material	Acrylic, glass aluminium sandwich
Frame material	Aluminium
Frame finish	Anodised or powder coating
Operation	Electical 12 V DC
Options	Sunblind/Mosquito net



## Webasto marine comfort reference applications

We have made it our mission to improve our products every day. Our objective is to create the perfect atmosphere on board and to set the stage for an efficient workforce. That's what drive us. That's Feel the Drive.



34 m Ice Breaker: BlueComfort Premium  
252,000 BTU/h chiller + heater



37 m Passenger Boat: BlueCool Premium  
252,000 BTU/h chiller



Passenger Boat 121: BlueCool Premium  
252,000 BTU/h chiller



52 m Buoy Layer: BlueCool Premium  
572,000 BTU/h chiller



36 m Range Safety Boat: BlueCool Premium  
36,000 BTU/h chiller



# When our service is as boundless as your freedom: That's Feel the Drive.

## Service

- We ensure a global network with over 50 locations throughout the world via our subsidiaries, representatives and hundreds of dealers
- We guarantee an international warranty on our commissionings
- We offer global trainings and technical guidelines
- We guarantee a fast availability of spare parts
- We are at your location with our dedicated marine service team

## Quality

- We benefit from the high automotive standards and related advanced technologies
- We deliver personalized solutions for individual customer needs
- We provide fully tested, pre-assembled and ready-to-be-mounted solutions
- We supply added-value accessories
- Our solutions are highly engineered

## Competence

- Our teams are made up of marine specialists and technical experts
- We can support our customers with any kind of commissioning
- Our innovations are the result of open communications and close partnership with our customers

## Professional quotation & warranty tools

- Webasto commercial boats products are developed and tested according to marine standards
- We provide complete engineering and service solutions for our products
- Webasto can optimize the integration of products into commercial boats using a range of simulation programs to maximize comfort and efficiency



Have a look at our animation about climate solutions on commercial boats.



Would you like to learn more about Webasto and our product portfolio?

[www.webasto-marine.com](http://www.webasto-marine.com)

