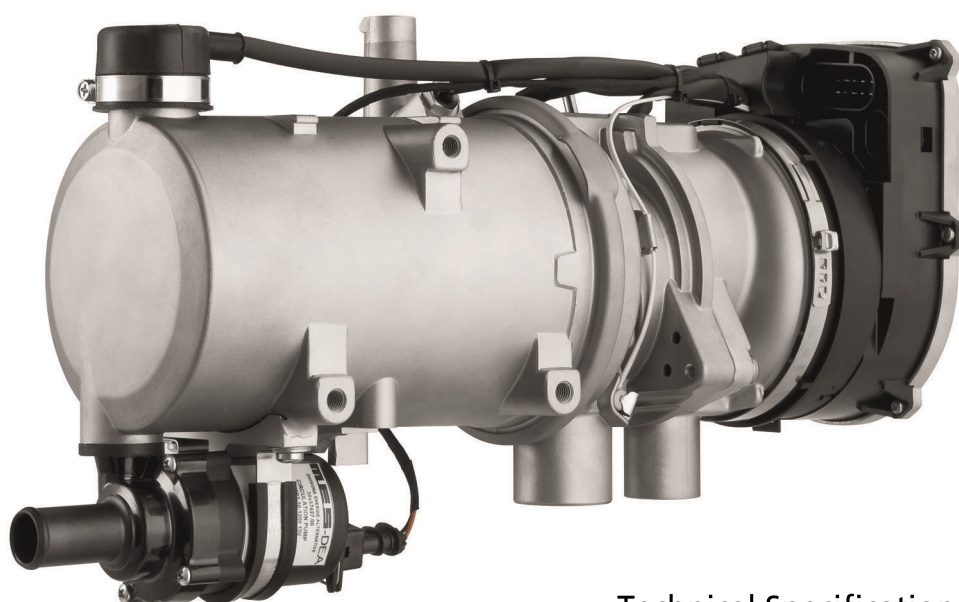


# Thermo Pro 90 water heater

## On demand hot water



The Webasto Thermo Pro 90 water heater is the ideal solution for both your domestic hot water and space heating needs.

These heaters can be installed with minimal space requirements, and when combined with our plate heat exchanger will provide infinite hot water at a flick of a switch. Add fan heaters to the system to easily warm the cabin interior.

Boasting a compact design, high heat output, reliable proven technology, low noise and extremely low emissions, the Webasto Thermo Pro 90 is everything you need to keep you comfortable.

### Technical Specifications

	Thermo Pro 90
Voltage (V)	12/24
Heat Output (kW) Partial Load - Full Load	1.8 - 7.6 (boost mode 9.1)
Fuel; Fuel Consumption (L/Hr) Partial Load - Full Load	Diesel; 0.21 – 0.92 (boost mode 1.14)
Power Consumption (W) Partial Load - Full Load	37 - 80 (boost mode 90)
Dimensions (LxWxH mm) Weight (kg)	355 x 131 x 224 4.9
Buffer Tank (capacity L)	5.3
Plate Heat Exchanger (LxWxH* mm) * including fittings	209 x 78 x 47
Fan Heater (kW) - size range	1.5 - 8.8

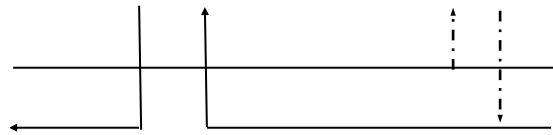
Buffer Tank



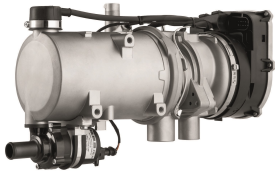
Fan Heater



Plate Heat Exchanger



Thermo Pro 90 Heater



Hot Water Outlet

Cold Water Inlet



On-board water supply



**Programmable Digital Multi Control**  
Digital controller with easy to read screen, programming knob and Timer function.



Webasto Thermo & Comfort Australia Pty Ltd  
423-427 The Boulevard  
Kirrawee NSW 2232  
Australia  
Phone: +61 (0)2 8536 4800  
Fax: +61 (0)2 8536 4899  
info@webasto.com.au

[www.webasto.com.au](http://www.webasto.com.au)